



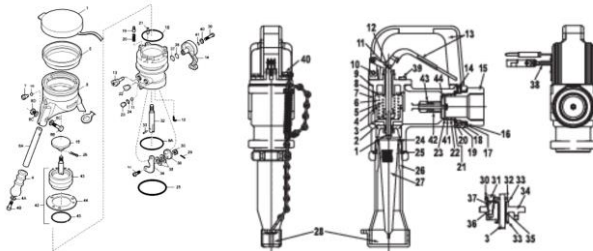
**PEAR**

BULLETIN 2015-1

## AVIATION FUELING NOZZLES

Now available from PEAR, under-wing and over-wing fueling nozzles. Available brands for under-wing nozzles from Eaton-Carter, Cla Val and Whittaker. Available for over-wing nozzles are OPW and Gammon.

Also available are repair/overhaul parts and accessories to keep your operation up and running.



Are you experiencing delivery issues for nozzles and replacement parts? Discuss your issue with PEAR and we can implement a program to keep your operation running smoothly with any parts issues you may be experiencing.



***Let us be your one stop shop!***



PEAR HOSE CORPORATION  
130 Saw Road, PO Box 938  
Darby, Montana 59829  
Phone: 406-821-2224

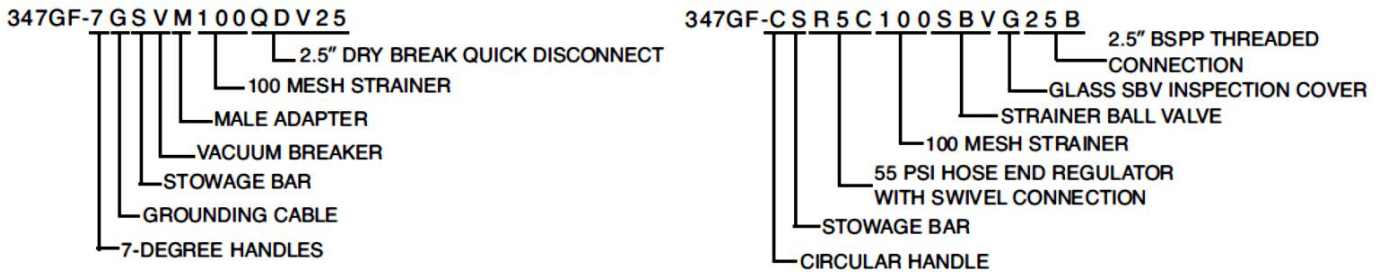
PEAR CANADA CORPORATION  
400 Sheldon Drive, Unit 14  
Cambridge, Ontario N1T 2H9  
Phone: 519-623-9696

[www.pearcorp.com](http://www.pearcorp.com)  
[info@pearcorp.com](mailto:info@pearcorp.com)

# CLA VAL Single Point Nozzle

## Create Complete Model Numbers for Various Applications

It is easy to customize a 347GF Refueling Nozzle to meet special requirements. Complete model numbers always begin with "347GF". Add your option selections to this base model number, following the flow chart above from left to right. See example below.



## Available Options for Model 347GF

C	CIRCULAR HANDLE	M	MALE QUICK DISCONNECT ADAPTER
H	STANDARD HANDLES	40	40 MESH STRAINER
L	LONG HANDLES	60	60 MESH STRAINER
7	STANDARD HANDLES WITH 7° BEND	100	100 MESH STRAINER
15	STANDARD HANDLES WITH 15° BEND	QD	STANDARD QUICK DISCONNECT
G	GROUNDING CABLE	QDV	DRY BREAK QUICK DISCONNECT
V	VACUUM BREAKER	SBV	349GF STRAINER BALL VALVE
S	STOWAGE BAR	B	BLANK SBV INSPECTION COVER
R3C	35 PSIG HOSE END REGULATOR WITH SWIVEL CONNECTION	G	GLASS SBV INSPECTION COVER
R4C	45 PSIG HOSE END REGULATOR WITH SWIVEL CONNECTION	20	2-INCH NPT THREADS
R5C	55 PSIG HOSE END REGULATOR WITH SWIVEL CONNECTION	20B	2-INCH BSPP THREADS
R3	35 PSIG HOSE END REGULATOR WITH FLANGED OUTLET	25	2.5-INCH NPT THREADS
R4	45 PSIG HOSE END REGULATOR WITH FLANGED OUTLET	25B	2.5-INCH BSPP THREADS
R5	55 PSIG HOSE END REGULATOR WITH FLANGED OUTLET	30	3-INCH NPT THREADS
D-3C	D-3 MALE QD INLET WITH SWIVEL CONNECTION	30B	3-INCH BSPP THREADS
D-3CR	D-3 MALE QD INLET WITH FLANGED CONNECTION		

# EATON-CARTER Single Point Nozzles

Contact us for the specific nozzle you require. Eaton-Carter has many different model series and options available.

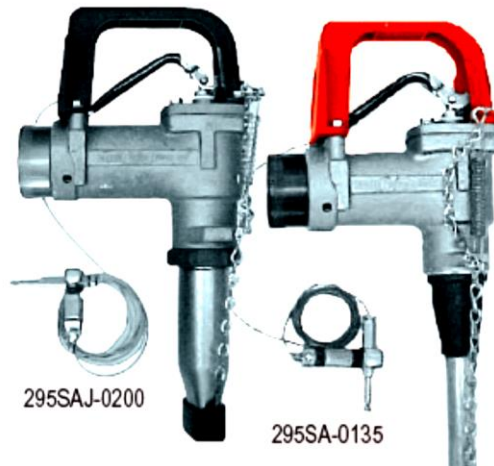
60427 – 64348 – 64200 – 64250 – 64049

Also PEAR can supply your needs for hydrant couplers, pit valves and other fueling equipment requirements.

## OPW Over-wing Nozzle

### Materials

- Body:** Cast aluminum
- Main Stem:** Stainless steel
- Stem Seal:** Buna-N O-Ring
- Disc:** Viton®
- Spout:** Aluminum



### Ordering Specifications

Product #	Inlet Thread				Spout O.D.	
	in.	mm	lbs.	kg	in.	mm
295SA-0135	1	25	4.60	2.10	1	25
295SA-0136	1¼	32	4.50	2.00	1	25
295SA-0137	1½	38	4.50	2.00	1	25
295SA-0138	1½	38	5.10	2.30	1½	41
295SAJ-0200	1½	38	5.60	2.50	2½	54
295SAC-0156*	1¼	32	4.50	2.00	1	25
295SAC-0157*	1½	38	4.50	2.00	1	25
295SAC-0158*	1½	38	5.15	2.30	1½	41
295SACJ-0200*	1½	38	5.65	2.60	2½	54

\*Check Valve

For more detailed ordering information, please contact us at 406-821-2224 or [info@pearcorp.com](mailto:info@pearcorp.com)